



Spare parts package for KÖB Pyrot* / Vitoflex 300-RF*

Protect against extended system shut-downs

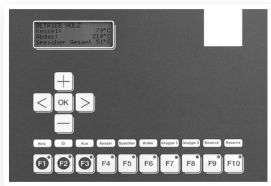


To protect your boiler against extended shut-downs during the winter, we recommend storing critical parts that can be involved in a shut-down on site. Specifically for this purpose, we have compiled a parts package for various boiler models and generations of control units.

The parts package contains the most important, commonest components that can be involved in a rapid shut-down of your boiler. However, not all potential shutdown factors can be ruled out.

The contents of both parts packages are identical. Only the models vary depending on the generation of control units.

Spare part packages



Pyrot* with Ökotronic control unit

Item number: 2001.3731



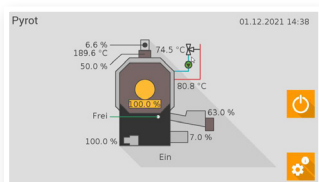
Pyrot* with Ecotronic control unit

Item number: 2001.3726



Pyrot* with Ecocontrol control unit

Item number: 2001.3727



Pyrot* with Schmid AC3 control unit / converted by Ökotronic

Item number: 2001.3730

Pyrot* with Schmid AC3 control unit / converted by Ecotronic

Item number: 2001.3739

© 2025 - Reproduction, including of excerpts, is prohibited.

* Pyrot and Pyrotec are registered trademarks of MAWERA Holzfeuerungsanlagen GmbH.

* Vitoflex and Vitoligno, as well as Viessmann are registered trademarks of Viessmann Group GmbH & Co. KG or its group companies.

All KÖB trademarks are used with the kind permission of KÖB Holzheiztechnik e.K. / www.kob.cc

We reserve the right to make technical changes based on product development. All of the figures are intended as examples. 01.01.2025

Spare parts package for KÖB Pyrot* / Vitoflex 300-RF*

- Ignition unit with connection cable



- Light barrier transmitter, receiver, amplifier



- Temperature sensor



- Lambda probe, including insulation washer and nut



- Roller chain and connecting link



- Clamp set and taper lock bush



- Flange bearing for drive boxes



- Sight glasses for light barriers



- Repair set for piston dedusting valve



Visit our webshop

© 2025 - Reproduction, including of excerpts, is prohibited.

* Pyrot and Pyrotec are registered trademarks of MAWERA Holzfeuerungsanlagen GmbH.

* Vitoflex and Vitoligno, as well as Viessmann are registered trademarks of Viessmann Group GmbH & Co. KG or its group companies.

All KÖB trademarks are used with the kind permission of KÖB Holzheiztechnik e.K. / www.kob.cc

We reserve the right to make technical changes based on product development. All of the figures are intended as examples. 01.01.2025

Schmid GmbH energy solutions

Holzriedstrasse 33 | 6960 Wolfurt | Austria

+43 (0)5574 93089-0 | info.wolfurt@schmid-energy.com | schmid-energy.at

SCHMID
energy solutions