



Spare parts package for KÖB Pyrotec* / Vitoflex 300-UF*

Protect against extended system shut-downs

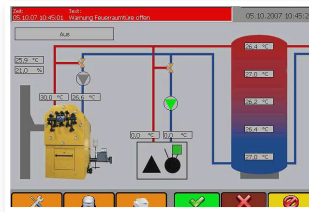


To protect your boiler against extended shut-downs during the winter, we recommend storing critical parts that can be involved in a shut-down on site. Specifically for this purpose, we have compiled a parts package for various boiler models and generations of control units.

The parts package contains the most important, commonest components that can be involved in a rapid shut-down of your boiler. However, not all potential shut-down factors can be ruled out.

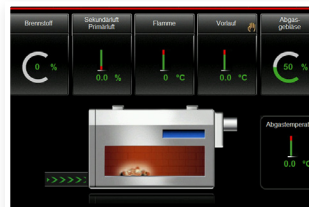
Spare parts package for Pyrotec* with Pyrocontrol controller

Item number: 2001.3728



Spare parts package for Pyrotec* with Ecocontrol controller

Item number: 2001.3729



The contents of both parts packages are identical. Only the models vary depending on the generation of control units.

© 2025 - Reproduction, including of excerpts, is prohibited.

* Pyrot and Pyrotec are registered trademarks of MAWERA Holzfeuerungsanlagen GmbH.

* Vitoflex and Vitoligno, as well as Viessmann are registered trademarks of Viessmann Group GmbH & Co. KG or its group companies.

All KÖB trademarks are used with the kind permission of KÖB Holzheiztechnik e.K. / www.kob.cc

We reserve the right to make technical changes based on product development. All of the figures are intended as examples. 01.01.2025

Spare parts package for KÖB Pyrotec* / Vitoflex 300-UF*

- Ignition unit with connection cable



- Light barrier transmitter, receiver, amplifier



- Temperature sensor



- Combustion chamber sensor and negative pressure load cell



- Lambda probe, including insulation washer and nut



- Roller chain and connecting link



- Clamp set and taper lock bush



- Flange bearing for drive boxes



- Sight glasses for light barriers



- Repair set for membrane dedusting valve



Visit our webshop

© 2025 - Reproduction, including of excerpts, is prohibited.

* Pyrot and Pyrotec are registered trademarks of MAWERA Holzfeuerungsanlagen GmbH.

* Vitoflex and Vitoligno, as well as Viessmann are registered trademarks of Viessmann Group GmbH & Co. KG or its group companies.

All KÖB trademarks are used with the kind permission of KÖB Holzheiztechnik e.K. / www.kob.cc

We reserve the right to make technical changes based on product development. All of the figures are intended as examples. 01.01.2025

Schmid GmbH energy solutions

Holzriedstrasse 33 | 6960 Wolfurt | Austria

+43 (0)5574 93089-0 | info.wolfurt@schmid-energy.com | schmid-energy.at

SCHMID
energy solutions