



# New grate for KÖB Pyrot\* / Vitoflex 300-RF\*

## Consistent performance with self-cleaning grate



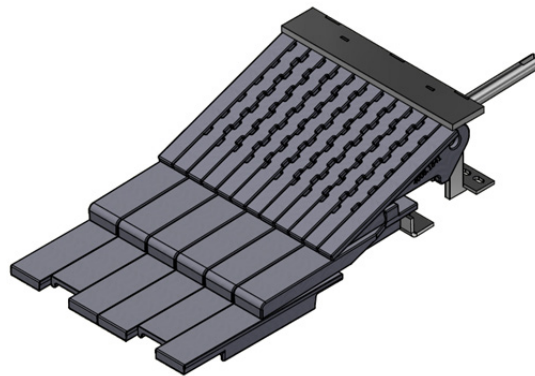
With the newly developed grate for KÖB Pyrot\* (Vitoflex 300-RF)\* boiler, the manual grate cleaning interval can be significantly extended. The new grate has been available from Schmid Wolfurt since 2023. It has already been tested by us in advance and classified as a major improvement.

Thanks to the new grate, significantly longer run times without needing to clean the grate have been achieved without losses in performance.

The new grate elements are fully compatible with the current grate and easily exchangeable.

### Your benefits

- Consistent performance due to the self-cleaning primary air zone
- Higher central grate - for better transport of ash
- Grate cleaning interval can be extended until the heat exchanger is cleaned without losses in performance
- Larger gap for ash discharge - fewer blockages
- Grate lamellae are arranged offset - no foreign bodies that can block the grate
- No grate fingers that need to be manually cleaned
- Robust cast iron grate for a long service life



Visit our webshop

© 2025 - Reproduction, including of excerpts, is prohibited.

\* Pyrot and Pyrotec are registered trademarks of MAWERA Holzfeuerungsanlagen GmbH.

\* Vitoflex and Vitoligno, as well as Viessmann are registered trademarks of Viessmann Group GmbH & Co. KG or its group companies.

All KÖB trademarks are used with the kind permission of KÖB Holzheiztechnik e.K. / www.kob.cc

We reserve the right to make technical changes based on product development. All of the figures are intended as examples. 01.01.2025

**Schmid GmbH energy solutions**

Holzriedstrasse 33 | 6960 Wolfurt | Austria

+43 (0)5574 93089-0 | info.wolfurt@schmid-energy.com | schmid-energy.at

# Improvements thanks to a new grate

## before

- No self-cleaning
- Rust fingers with limited movement
- High cleaning effort
- Capacity decreases quickly
- Small ash discharge slot

## after

- ✔ Self-cleaning ventilation zone
- ✔ Fully movable grate for constant capacity
- ✔ Minimal cleaning required
- ✔ Consistent, reliable performance
- ✔ Large gap for improved ash removal



© 2025 - Reproduction, including of excerpts, is prohibited.

\* Pyrot and Pyrotec are registered trademarks of MAWERA Holzfeuerungsanlagen GmbH.

\* Vitoflex and Vitoligno, as well as Viessmann are registered trademarks of Viessmann Group GmbH & Co. KG or its group companies.

All KÖB trademarks are used with the kind permission of KÖB Holzheiztechnik e.K. / [www.kob.cc](http://www.kob.cc)

We reserve the right to make technical changes based on product development. All of the figures are intended as examples. 01.01.2025

**Schmid GmbH energy solutions**

Holzriedstrasse 33 | 6960 Wolfurt | Austria

+43 (0)5574 93089-0 | [info.wolfurt@schmid-energy.com](mailto:info.wolfurt@schmid-energy.com) | [schmid-energy.at](http://schmid-energy.at)

**SCHMID**  
energy solutions