

## SPARE PARTS PACKAGE FOR YOUR KÖB PYROTEC\* / VITOFLEX 300-UF\*

### PROTECT AGAINST EXTENDED SYSTEM SHUT-DOWNS

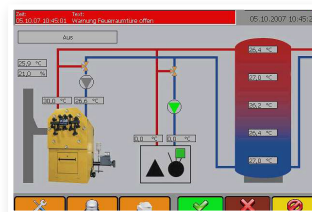
To protect your system against extended shut-downs during the winter, we recommend storing critical parts that can be involved in a shut-down on site. Specifically for this purpose, we have compiled a parts package for various boiler models and generations of controllers.

The parts package contains the most important, commonest components that can be involved in a rapid shut-down of your boiler. However, not all potential shut-down factors can be ruled out.



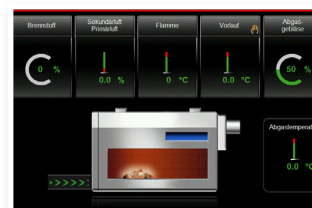
### Parts package for Pyrotec\* with Pyrocontrol controller

Item number: 0500.9046



### Spare parts package for Pyrotec\* with Ecocontrol controller

Item number: 0500.9047



The contents of both parts packages are identical. Only the models vary depending on the generation of controller.

© 2023 - Reproduction, including of excerpts, is prohibited.

\* Pyrot and Pyrotec, as well as KÖB are registered trademarks of MAWERA Holzfeuerungsanlagen GmbH.

\* Vitoflex and Vitoligno, as well as Viessmann are registered trademarks of Viessmann Group GmbH & Co. KG or its group companies.

We reserve the right to make technical changes based on product development. All of the figures are intended as examples. 09/01/2023

Schmid GmbH energy solutions

www.schmid-energy.at | info.wolfurt@schmid-energy.com | Telephone +43 (0)5574 93089-0

**SCHMID**  
energy solutions

# SERVICES FOR KÖB\* BOILERS

## SPARE PARTS PACKAGE FOR YOUR KÖB PYROTEC\* / VITOFLEX 300-UF\*

- Ignition unit with connection cable



- Light barrier transmitter, receiver, amplifier



- Temperature sensor



- Combustion chamber sensor and negative pressure load cell



- Lambda probe, including insulation washer and nut



- Roller chain and connecting link



- Clamp set and taper lock bush



- Flange bearing for drive boxes



- Sight glasses for light barriers



- Repair set for membrane dedusting valve



© 2023 - Reproduction, including of excerpts, is prohibited.

\* Pyrot and Pyrotec, as well as KÖB are registered trademarks of MAWERA Holzfeuerungsanlagen GmbH.

\* Vitoflex and Vitoligno, as well as Viessmann are registered trademarks of Viessmann Group GmbH & Co. KG or its group companies.

We reserve the right to make technical changes based on product development. All of the figures are intended as examples. 09/01/2023

Schmid GmbH energy solutions

www.schmid-energy.at | info.wolfurt@schmid-energy.com | Telephone +43 (0)5574 93089-0

**SCHMID**  
energy solutions