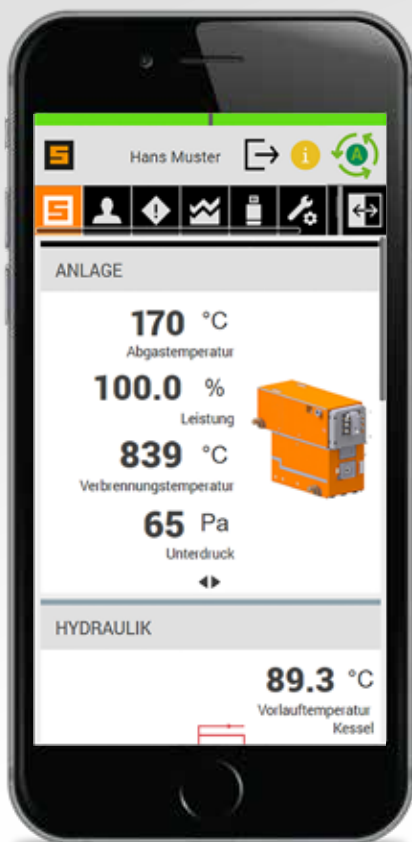


# PERSONALTOUCH VISIO



Schmid AG energy solutions impresses with a new touch panel. The PersonalTouch visio is a completely new development. In addition to a modern design and a high level of user-friendliness, care was taken to ensure that the latest web technology is used. The consistent implementation of these three points resulted in a modern operating system that meets the high demands of Schmid combustion systems.

## HTML5 technology

The Schmid Touch Panel is based on HTML5 web technology, the global standard for modern web browsers. The use of this technology results in a wide range of options for operating the firing systems. Four independent connections can be made to the system at the same time for operation via a smartphone, tablet or the built-in touch panel.

# PersonalTouch visio

## INTUITIVE OPERATION



The dashboard gives the operator an overview of the current system status at any time. The desired information on the dashboard can be selected individually. The new operating system is divided into two areas. The first menu group is explicitly for the operator and includes all system information that can be important on a daily basis.

The second menu includes the complete parameterization of the combustion chamber and is designed for the service personnel. The operator can see the exact status of each part of the system in the parameter overview. In addition, all system settings are carried out in this area.

### Key Functions at a Glance

- Intuitive operation with a modern design
- Dashboard for a quick overview of the system, with switchable tiling
- Help texts for all functions of the system
- Personal login, user language and user level
- Comprehensive configuration and parameter setting options for the various controllers and functions using topic-related structuring
- Management of up to 20 parameter settings
- Saving of parameter settings and recordings on USB stick
- Presentation of prepared target/actual values in clear graphics
- Graphic display of up to 30 measured values over the last few hours
- Operating statistics with various graphic evaluations
- Time switch for up to 50 time-controlled functions
- Display of current events with filter function
- History of the last 200 events with filter function
- Recording of measured values, user inputs and events in the background (in csv file)
- Log book for entering service and operation entries
- Maintenance plan with service intervals
- Automatic time synchronization via NTP time server
- Integration of the live image from the combustion chamber camera (option)
- Easy remote access (option) via Chrome browser
- Desktop version (option) with simple visualization of the system
- Mobile version (option) for easy display on smartphone

